



# ***Architecture***







**TPRO** is a specialist in **design, supply, installation, qualification** and **start up** of turnkey projects for the **pharmaceutical, veterinarian, biotech** and similar industries.

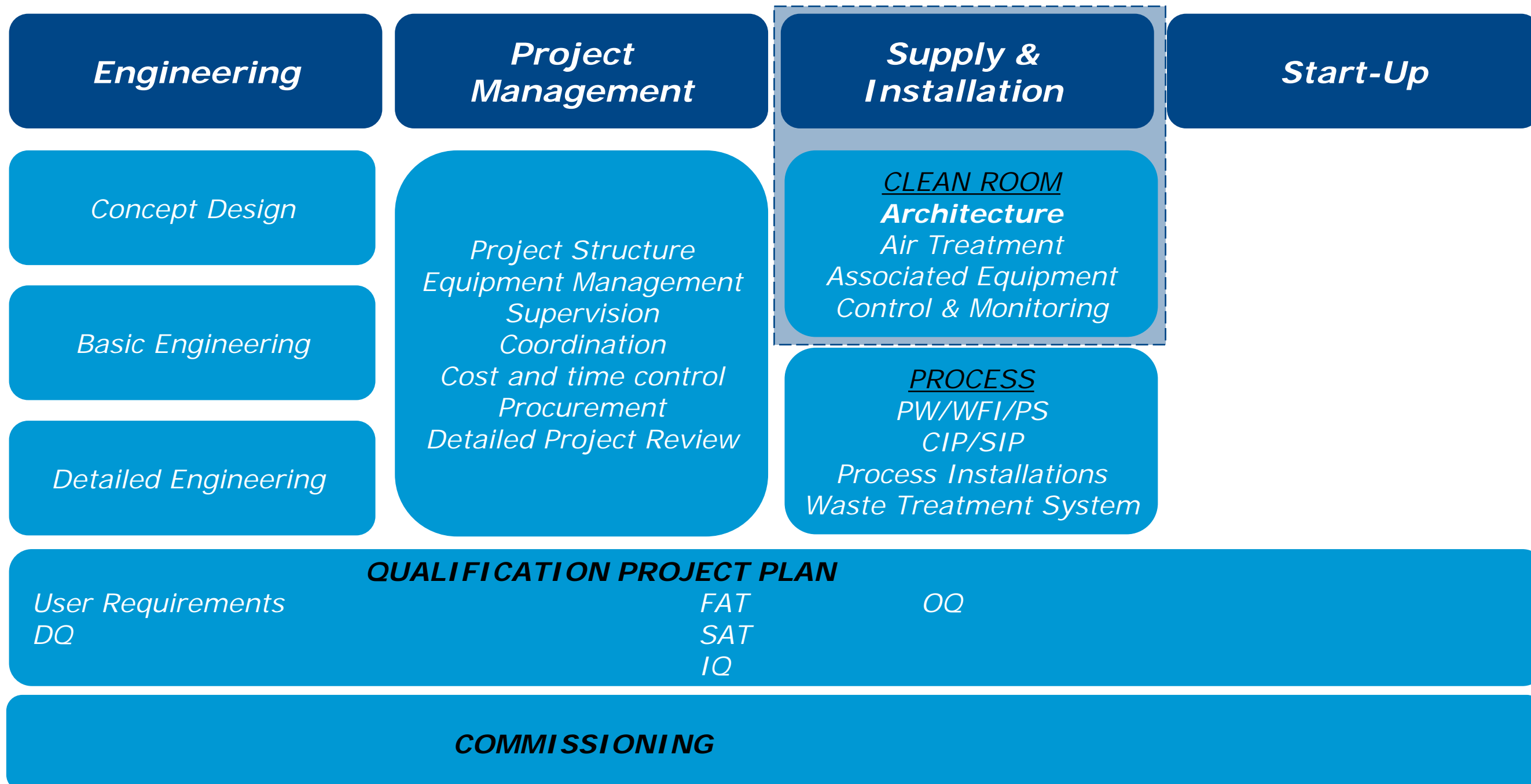


# ARCHITECTURE

## INTRODUCTION



**TPRO** offers a complete **clean room technology** package as a part of a **turnkey project**







*Layout design is fundamental to maintaining **containment / sterility commitments**. The laboratory interior has to be designed so that it is **easily cleaned** and **sanitized**, **inorganic**, **impermeable** to liquids and **resistant** to any chemical agents that might be employed.*





**Sandwich panels** consist of two oven-lacquered **galvanized steel** sheets. The finish gives them good chemical resistance to detergents and disinfectant products that are normally used in clean rooms

### TECHNICAL DATA

#### >SURFACE

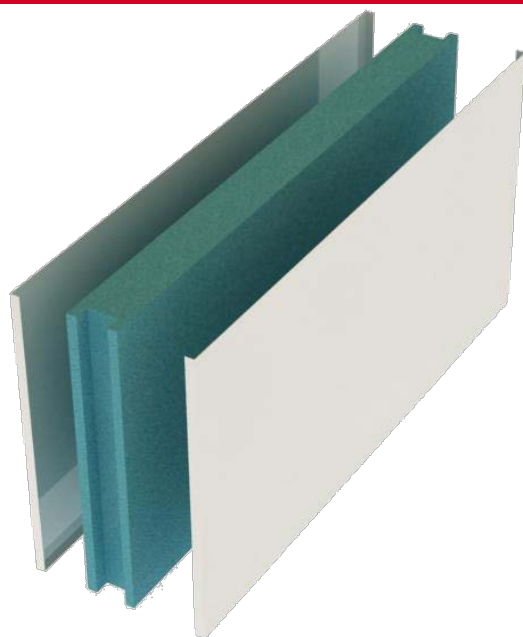
0.6 mm lacquered galvanized steel

#### >INSULATING CORE

Expanded Polystyrene (EPS)  
Extruded Polystyrene (XPS)  
Rock wool (RW)  
Polyurethane (PU)  
Polysocyanurate (PIR)  
Honey Comb (HC)

#### >MEASUREMENTS

Height: 6.000 mm onwards  
Width: 200 mm – 1.200 mm  
Thickness: 50 mm



**Sandwich panels** consist of two **phenolic resin sheets**. These sheets have excellent chemical resistance to detergents and disinfectant products that are normally used in clean rooms.

TECHNICAL DATA	
>SURFACE	3 mm phenolic resin
>INSULATING CORE	Extruded Polystyrene (XPS) Rock wool (RW) Polysocyanurate (PIR) Honey Comb (HC)
>MEASUREMENTS	Height: 6.000 mm onwards Width: 200 mm – 1.200 mm Thickness: 50 mm

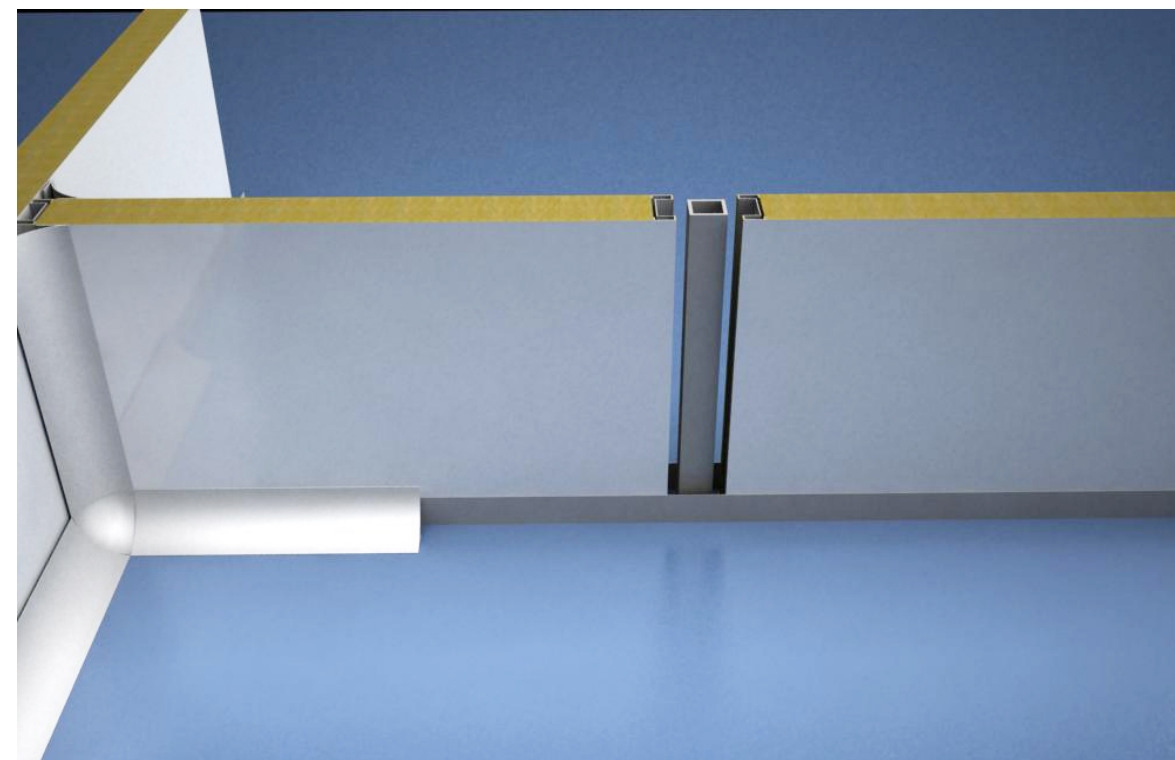
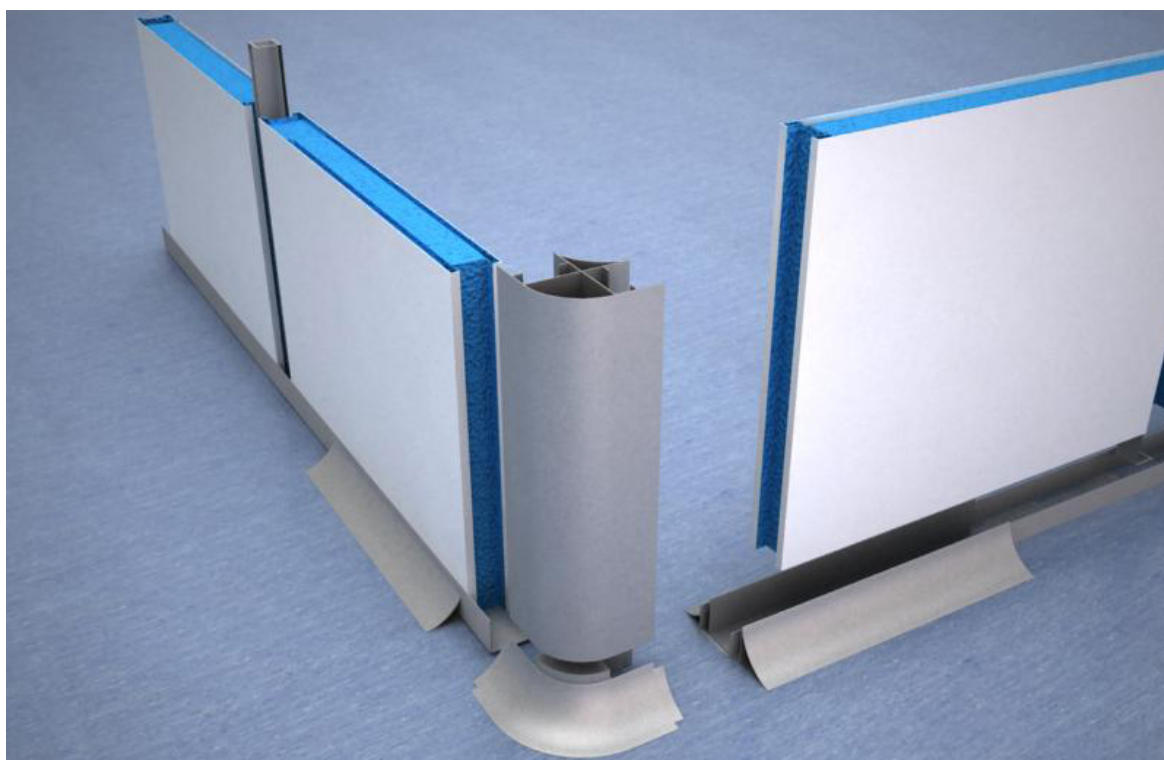


# ARCHITECTURE

## ASSEMBLY SYSTEM: WALL PANEL



The panels rest on an **U-shaped galvanized steel** sheet fixed to the floor. They are attached to each other by an **aluminium connector** (30 x 30 mm). All these elements together form a continuous and self-supported unit. The connector can also be used to integrate cables and process tubing. Joints are sealed with a silicone run.



# ARCHITECTURE

## WALL PANEL







**Sandwich panels** consist of two oven-lacquered **galvanized steel** sheets. The finish gives them good chemical resistance to detergents and disinfectant products that are normally used in clean rooms

### TECHNICAL DATA

#### >SURFACE

0.6 mm lacquered galvanized steel

#### >INSULATING CORE

Expanded Polystyrene (EPS)  
Extruded Polystyrene (XPS)  
Rock wool (RW)  
Polyurethane (PU)  
Polysocyanurate (PIR)  
Honey Comb (HC)

#### >MEASUREMENTS

Height: 6.000 mm onwards  
Width: 200 mm – 1.200 mm  
Thickness: 50 mm

# ARCHITECTURE

## ASSEMBLY SYSTEM: CEILING PANEL



The panels are attached to each other by an **aluminum connector**, thereby making a **continuous** and **self-supporting** unit. Panel suspension is done by **special connectors**, **levelling supports** and **screwed rods**.







## DUCTS











**Anodized aluminum** or **PVC** sections, easy to clean, used for both horizontal and vertical joints between panels.

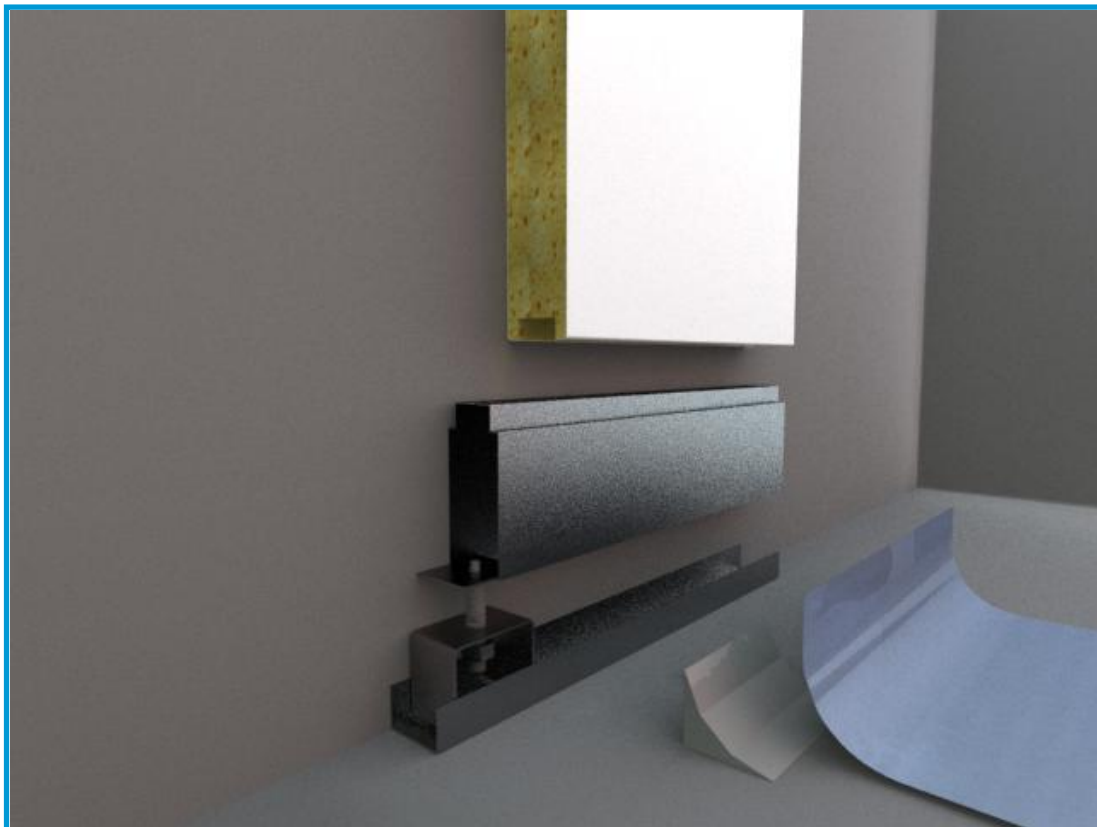




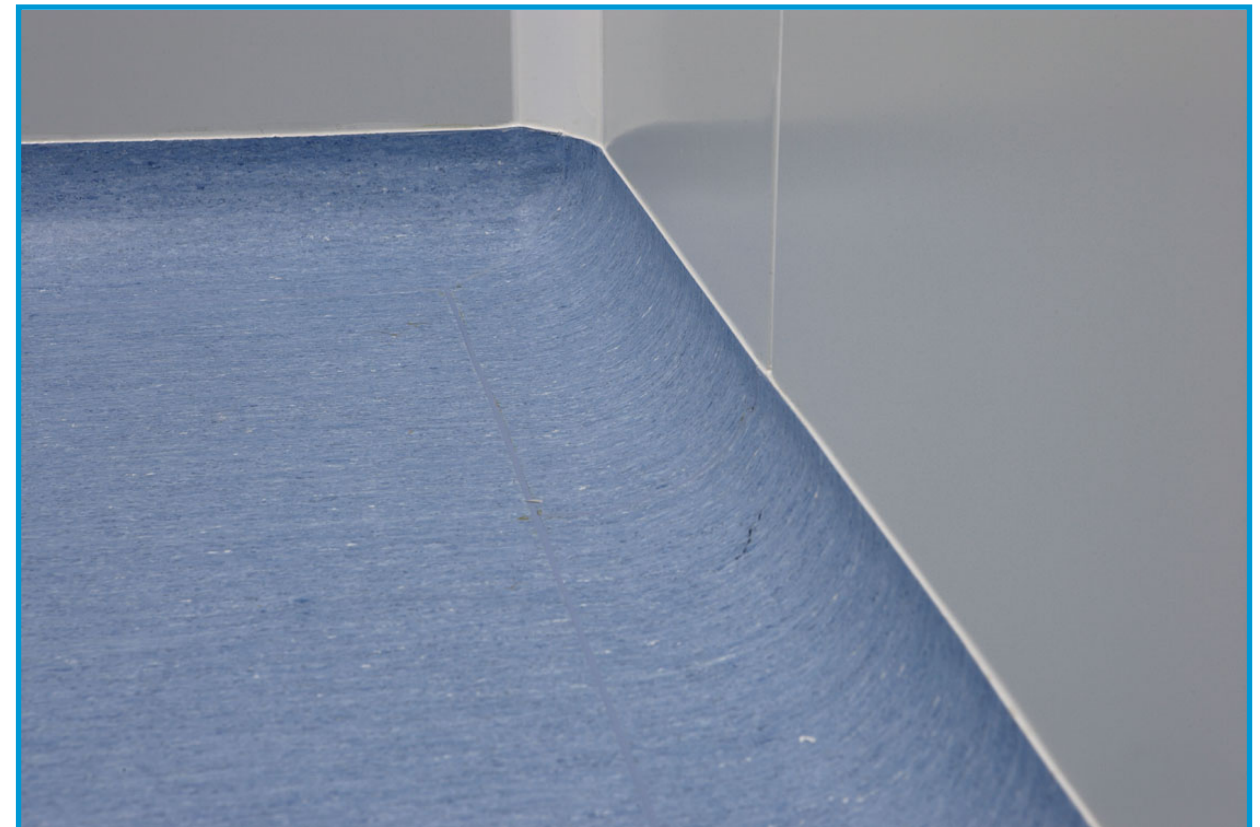
Panel/flooring fixation system using an adjustable base that makes possible to **level the profile perfectly horizontal**.

The system doesn't use sanitary profiles as scotia in panel/flooring joints, thereby ensuring a **continuous and even line**.

Seamless flooring allows the implementation of **monolithic flooring in PVC or epoxy resin**, with coved sanitary finishes.



ASSEMBLY SYSTEM



SEAMLESS FLOORING

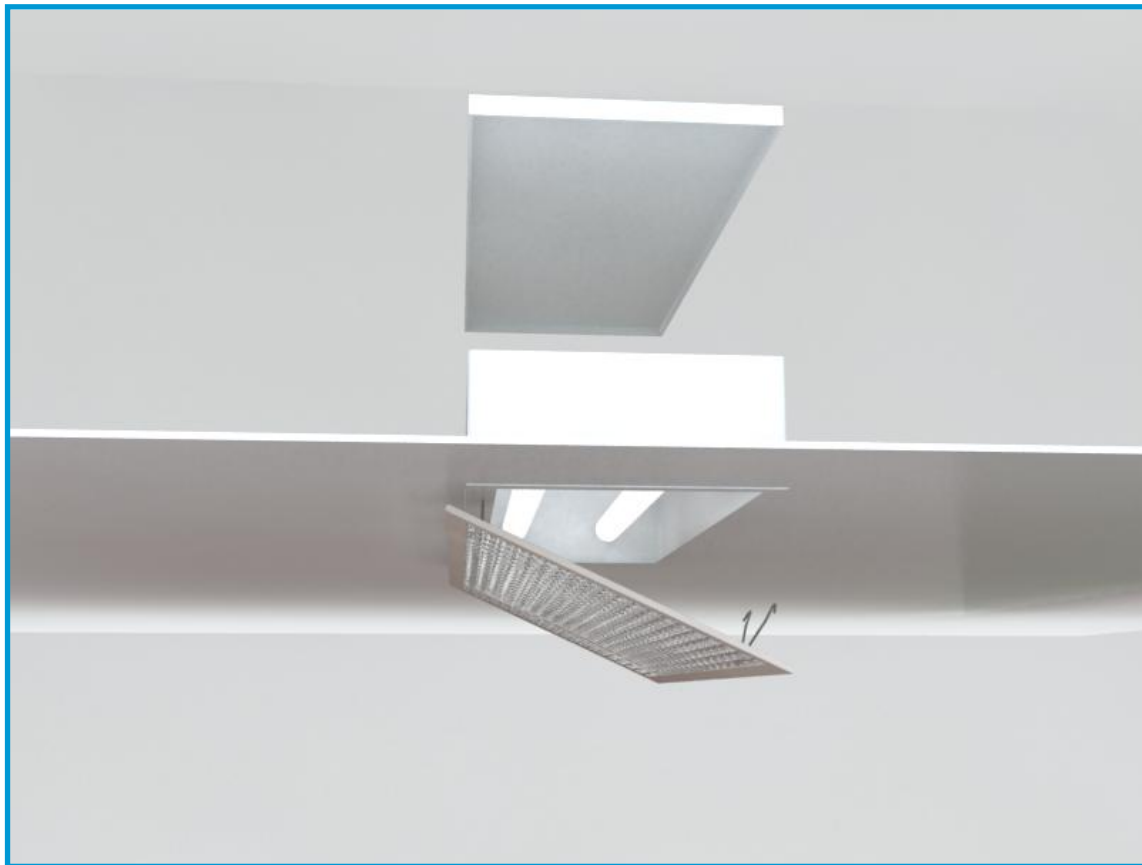




Built with **oven-lacquered metal** sheet 1 mm thick, to fit in the ceiling panel.

Easy to access from the top through a screwed cover with a sealing gasket, and from the bottom through a diffuser fastened with internal springs.

There are four different types of diffuser: **transparent glass**, **safety glass**, **opal glass** and **prismatic diffuser**.



OPENING SYSTEM



FALSE CEILING: LIGHTING



Doors comprise of an interior **steel or phenolic resin** sandwich panel. The doors are set in wall panels to form a **continuous structure**, thereby facilitating surface cleaning.



*Double metallic door with window and handle*

STANDARD DIMENSIONS (mm)	
1 SHEET	2 SHEETS
700x2.033	(700+400) x2.033
800x2.033	(900+400) x2.033
900x2.033	(800+800) x2.033
1.000x2.033	(900+900) x2.033

*Other dimensions available on request*



*Double phenolic resin door with window and handle*



*Your specialist in critical facilities*



[www.tpro.es](http://www.tpro.es)

