



STABILITY

FITOClima WALK-IN STABILITY



TEMPERATURE AND HUMIDITY STABILITY CHAMBERS



ICH, GMP, WHO, FDA COMPLIANT





Common applications include:

- Pharmaceuticals**
- Food and Beverages**
- Cosmetics**
- Veterinary**
- Storage and Conservation**
- Quality control and Research**

FitoClima Stability rooms provide the environmental control and storage flexibility to meet the evolving needs of customers throughout the years.



ARALAB

ARALAB is a company specialized in designing, developing, manufacturing and servicing of high quality climatic chambers and controlled environment rooms.

Since 1985 we have been perfecting ways to create and control temperature, humidity, light, pressure and many other environmental conditions.

Only the highest quality components are used to manufacture our chambers so customers can have the best equipment for their research and testing purposes.












Aralab. Your own climate.

KEY FEATURES

- Climatic conditions controlled with consistent precision through the years
- Adaptive future proof design, with height adjustable trays and shelves that are easy to insert or remove depending on storage needs
- Pre-configured with shelves designed to provide an efficient use of the internal volume.
- Content protection features, with configurable high / low temperature and humidity alarms and automatic remote notifications
- FDA 21 CFR part 11 compliant software
- Compliant and recognized by ICH, FDA, GMP and other leading industry standards
- IQ, OQ, PQ and ISO calibration documents




TECHNICAL SPECIFICATIONS

FITOCLIMA WALK-IN STABILITY CHAMBERS

 TEMPERATURE RANGE ^[1]	5°C to +45°C
 TEMPERATURE PRECISION	± 0,5°C
 TEMPERATURE UNIFORMITY	± 1,0°C
 HUMIDITY RANGE ^[1]	35 to 90% RH
 HUMIDITY PRECISION	± 1% RH
 HUMIDITY UNIFORMITY	± 2% RH
 SHELVES ^[2]	Shelves with 5 levels each. Anodized aluminium structures with polyethylene trays. Storage capacity will vary with final implementation layout and number of levels on each rack
 STANDARD STORAGE CAPACITY ^[3]	
	FitoClima 5.000 PH 7,5 m ²
	FitoClima 12.000 PH 13 m ²
	FitoClima 25.000 PH 29 m ²
 LIGHT	Interior is illuminated by fluorescent lights located at the ceiling in a protected cover. Lights can be operated by manual switch, triggered by door opening or controller integrated (programmable)
 AIRFLOW VELOCITY	Can be adjusted by set-point % on the controller
 INTERNAL VOLUMES ^[4]	Ranging from 5.000 to 25.000 liters



INSTALLATION REQUIREMENTS

 WATER	Distilled or demineralized water. 1 to 6 bar pressure and ≤ 10µ siemens conductivity.
 WATER DRAIN	Advisable: located at floor level and near the equipment, with a minimum inclination of 10° from chamber to drain
 ELECTRICAL CONNECTION	3/N/PE AC 400V ± 10%; 50Hz

[1] Temperature / Humidity range extension available. Please contact Aralab for other technical requirements

[2] FitoClima Stability rooms are pre-configured with shelves (5 levels each) to provide the most efficient use of the available space. Also available stainless steel AISI 304 shelves as option.

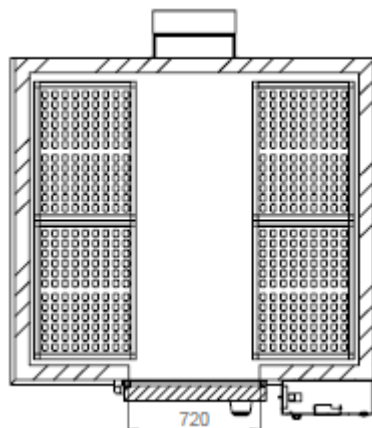
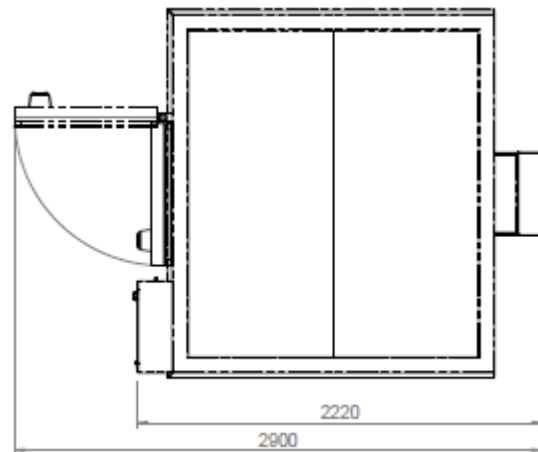
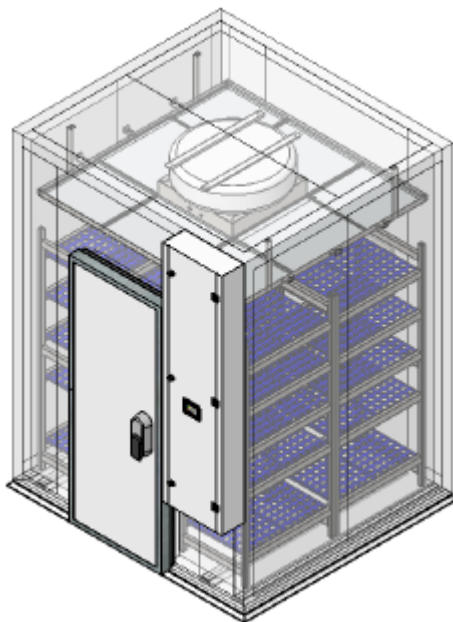
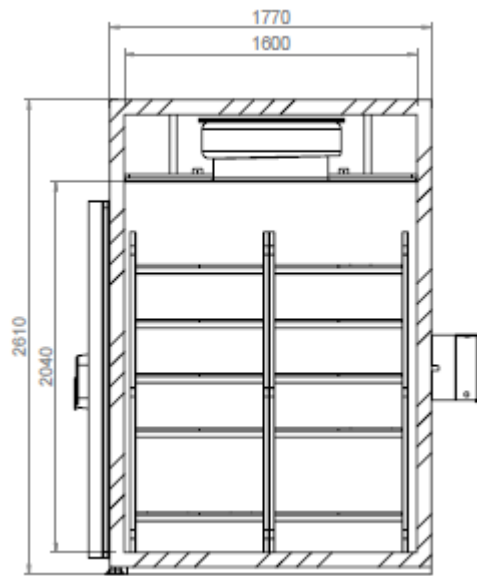
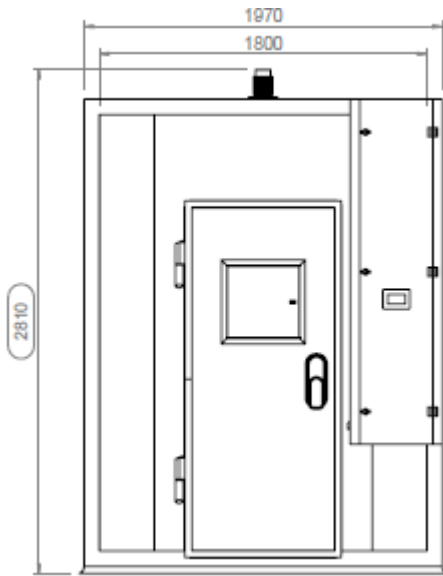
[3] Additional trays/levels can be added to shelving configuration.

[4] Other volumes available. Please consult Aralab for bespoke rooms and special requirements

DIMENSIONS AND DRAWINGS

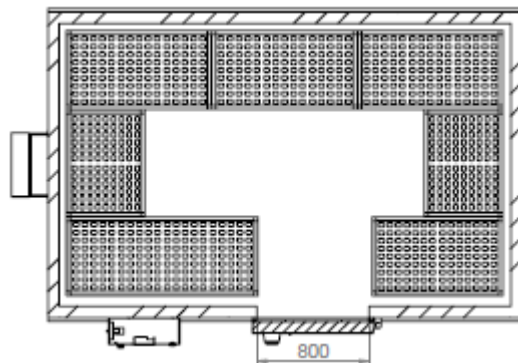
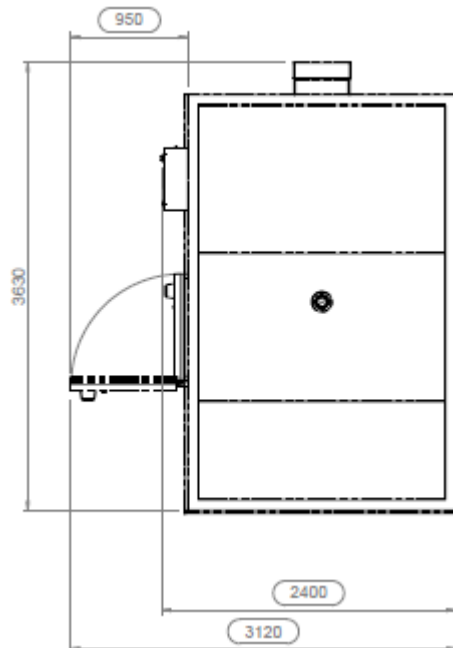
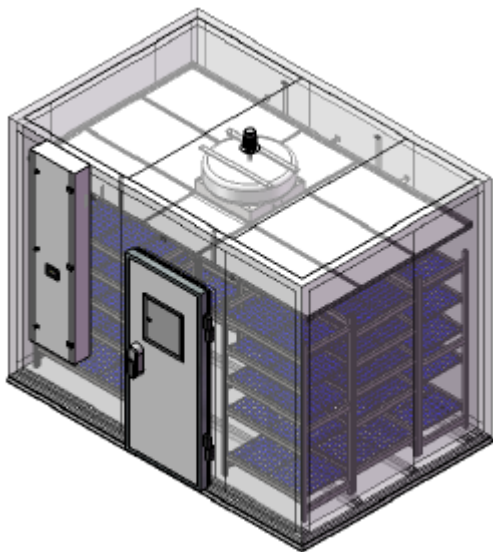
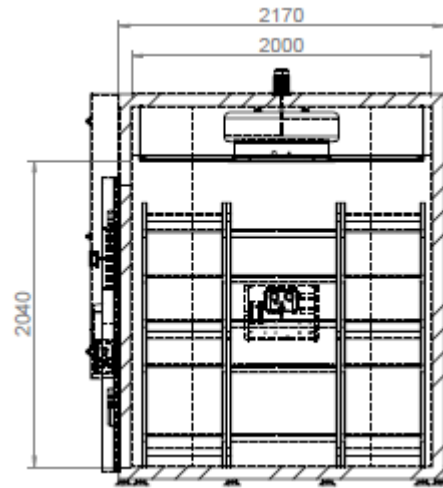
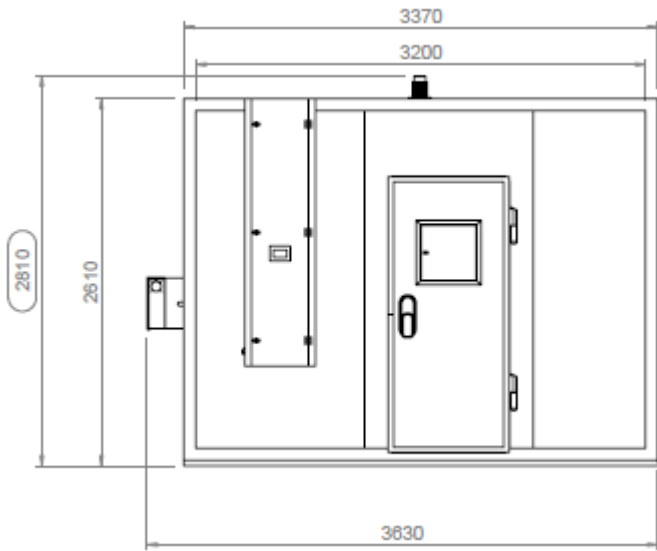
FITOCLIMA 5.000 PH

	EXTERNAL DIMENSIONS (H x W x D) (mm)	2.810 x 1.970 x 2.220
	INTERNAL DIMENSIONS (H x W x D) (mm)	2.040 x 1.800 x 1.600



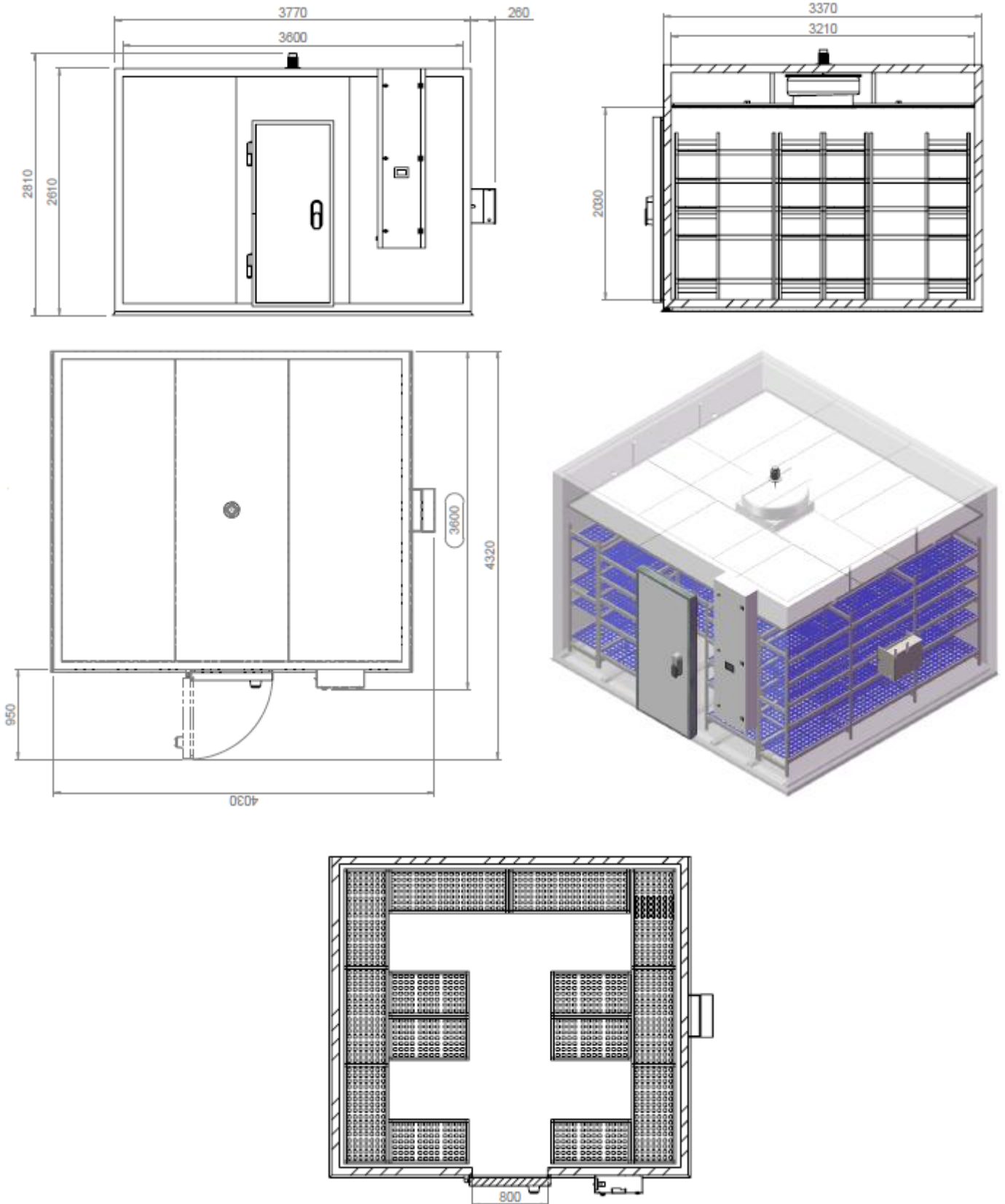
FITOCLIMA 12.000 PH

	EXTERNAL DIMENSIONS (H x W x D) (mm)	2.810 x 3.630 x 2.400
	INTERNAL DIMENSIONS (H x W x D) (mm)	2.040 x 3.200 x 2.000



FITOCLIMA 25.000 PH

	EXTERNAL DIMENSIONS (H x W x D) (mm)	2.810 x 4.030 x 3.600
	INTERNAL DIMENSIONS (H x W x D) (mm)	2.030 x 3.600 x 3.210



EQUIPMENT DESCRIPTION

CONSTRUCTION

- Exterior: EN 14509 sandwich type high density injected polyurethane foam modular panels, 80 mm thick (other thicknesses available for different specific insulation requirements) with galvanized steel in light gray plastic finish. CFC-free.
- Floor: slip resistant stainless steel floor
- Walls: Galvanized steel with white epoxy paint
- Shelving and trays: standard in anodized aluminium structures with polyethylene trays (5 racks); optional in highly resistant stainless steel
- 60mm Ø side entry port
- New generation multi-color touch-screen ClimaPlus© controller
- Door with double gasket, observation window with key and safety opening mechanism from the inside
- Open door alarm with configurable time-out function
- Free slots for connecting and integrating external devices with the ClimaPlus controller (CO₂, O₂ control, Auto Irrigation, Aeration, Radiometers and other)

CLIMATIC CONTROL

- Air based, CFC free, mechanical refrigeration by sealed condenser group
- Dual heating technology with hot gas by-pass and stainless steel electric heaters
- Humidification by ultrasonic generator with automatic water level control and self-cleaning function
- Dehumidification by condensation on the cooling system evaporator
- PT100 Class A temperature sensor and capacitive humidity sensor

AIR FLOW

- Dynamic airflow with EC (variable) blower
- Forced in horizontal and downward direction
- Horizontal laminar airflow across the shelves to assure uniformity to all growth area
- Air renovation through adjustable lateral port-holes
- Airflow velocity adjustable at the ClimaPlus© controller

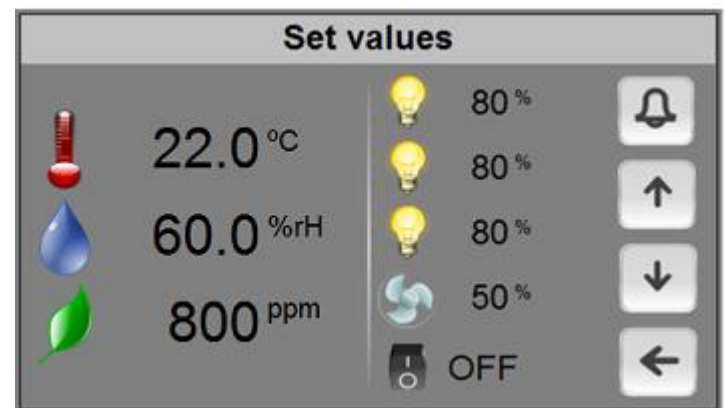
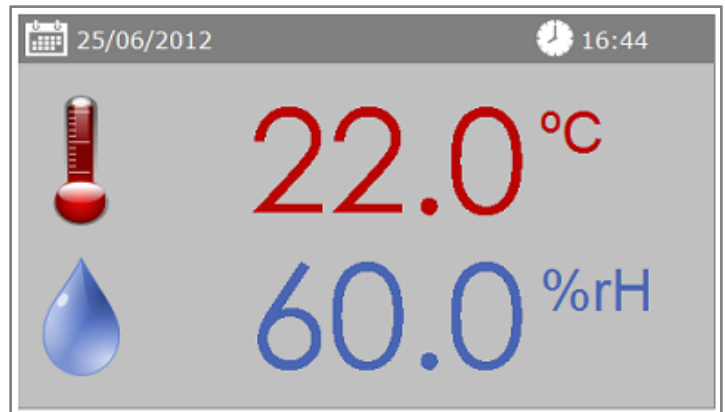
CONTENT PROTECTION AND SECURITY

- Independent thermostats for maximum and minimum temperature limits
- Automatic cut-off function, in case of excessive heating or cooling
- Configurable maximum and minimum temperature and humidity limits
- Visual and audible alarms for temperature and humidity band limits



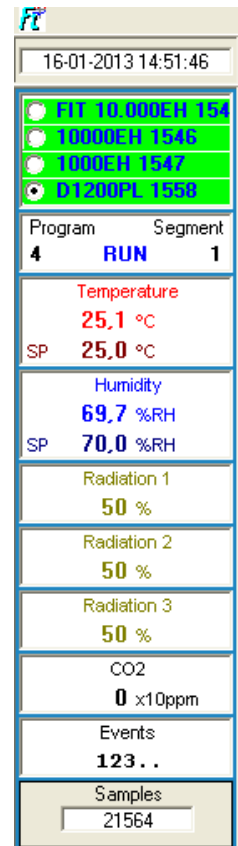
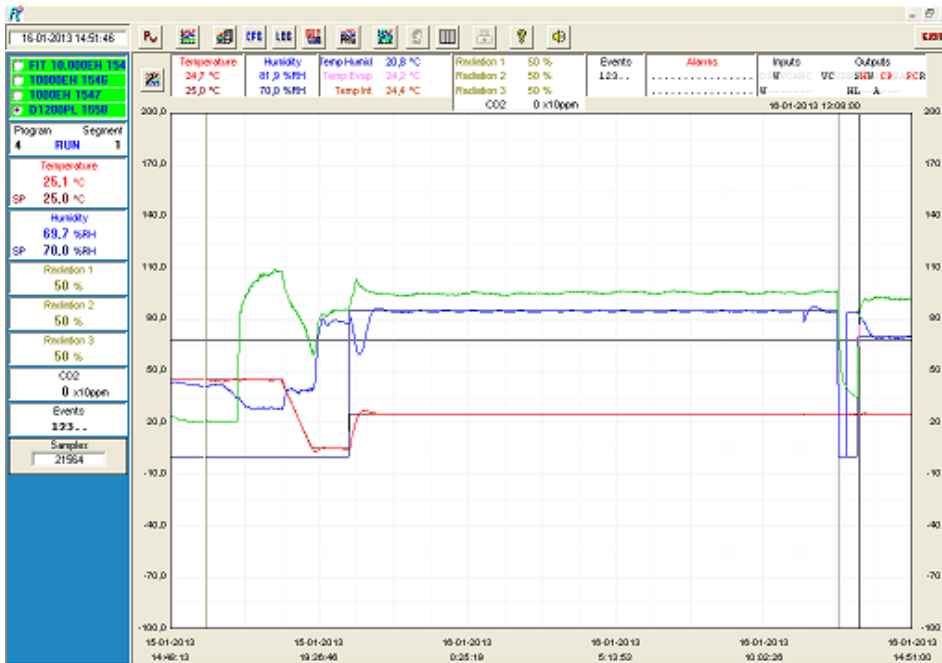
CLIMAPLUS CONTROLLER

- Programmable Logic Controller exclusively developed by Aralab for FitoClima chambers
- Easy to use touch-screen interface
- 168mm x 112mm multicolor display
- Controls every environmental variable available for any specific FitoClima model (Temperature, Humidity, Lights, Airflow, CO₂, O₂ and connected external devices)
- Friendly program editor for creating 32 programs of 24 segments each, allowing the design of complex and comprehensive climatic simulation programs
- Password protection of the controller functions
- Content and research protection feature, with configurable High and Low Temperature and Humidity alarms and automatic notifications
- Managing, monitoring and recording of all alarms
- Non-volatile memory, allowing the automatic restart of previously defined set-points or on-going programs due to power failure, without losing data
- Real-time monitoring of all the functions and active components of the equipment, allowing for a fast and accurate diagnostic in case of malfunction
- Possibility to control and program events by external commands and with external devices
- Graphical view of programs and climatic variables
- RS232/485, Ethernet and Wi-Fi for connecting computers to the controller
- ClimaPlus controller functions also available at the PC/Laptop with the FitoLog software pack

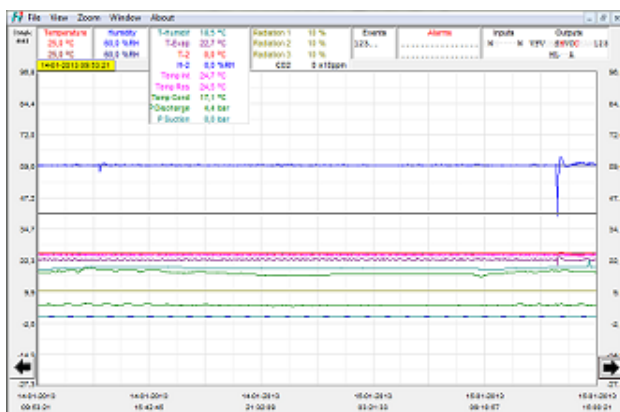


FITOLOG SOFTWARE

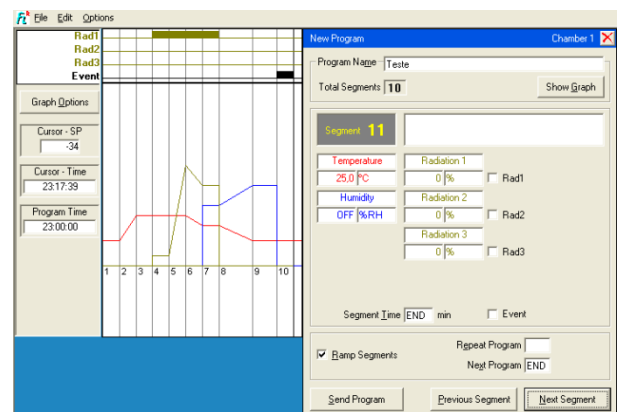
The FitoLog software pack (FDA 21 CFR part 11 compliant) is a set of applications designed to facilitate the managing, monitoring and recording of programs and data from the FitoClima chambers. It consists of 3 applications: **FitoLog**, **FitoLogView** and **FitoProgram**.



FitoLog: Records and displays in real time all data and details related to the set-points, running variables and equipment behaviour. It also retrieves information about the active components of the chamber, running processes, errors, alarms and allows the configuration of periodic or alarm triggered remote notifications (by email or SMS, depending on existing connections and accessories).



FitoLogView: It is a working tool to process the data recorded by the FitoLog program. One can view, print and export the log contents to other file types, and analyse the data in other data management software (Excel, Star Office, Access or others).



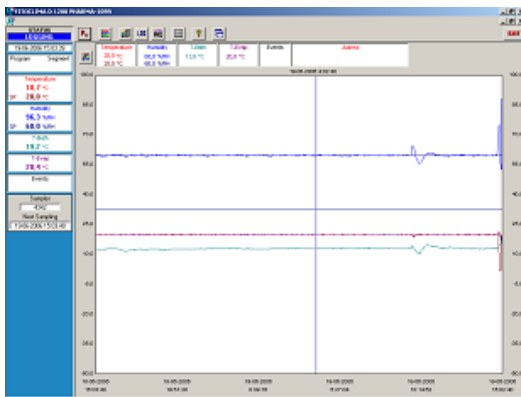
FitoProgram: This application simplifies the creation of programs and its integration on the chamber ClimaPlus controller. Up to 32 programs, each with 24 segments, can be designed and linked to create detailed environmental profiles and simulations.

Content of the chamber is secured with alarms, notifications, fast diagnostics and prompt

troubleshooting: With **FitoLog** it is possible to gather data from each of the chambers systems, which makes it a very useful tool to diagnose any necessary maintenance. This tool works as the “black box” of the equipment, giving Aralab technicians the necessary data to remotely carry out a fast and efficient diagnostic. All that is needed is a FitoLog file.

COMMON ACCESSORIES

- FitoLog® software pack for PC/Laptops, enabling data monitoring, logging (FDA 21 CFR part 11 compliant) and managing operations directly on a computer
- IQ, OQ, PQ validations and documentation
- ISO 17025 calibration
- Wireless / portable data loggers for temperature and humidity control of external areas
- Additional shelves and racks
- Shelves in AISI 304 stainless steel
- Phenolic resins coating for Entomology/Insects kit
- Ethernet / Wi-Fi / Other connections for computer connection
- Additional entry port
- Extended temperature ranges
- Integrated water tank with electric pump and security valve
- Wall mounting conductivity meter, for water quality control, with assembling accessories
- 5 stage Reverse Osmosis with pre-decalcification water treatment system
- Additional internal electrical connection sockets



FitoLog (FDA 21 CFR part 11) software pack



Stainless steel shelving and additional shelves



Integrated water supply tank



Wireless data loggers

Parâmetro	Unidade	Valor	Limite Inferior	Limite Superior	Resultado	Observações
Temperatura	°C	20,0	19,5	20,5	OK	
Humidade	%	65,0	64,0	66,0	OK	
Fluxo de ar	m³/h	10,0	9,5	10,5	OK	
Pressão	hPa	1013,25	1012,00	1014,50	OK	
Velocidade do ar	m/s	0,5	0,4	0,6	OK	
Umidade relativa	%	65,0	64,0	66,0	OK	
Temperatura do ar	°C	20,0	19,5	20,5	OK	
Temperatura da superfície	°C	20,0	19,5	20,5	OK	
Temperatura do sensor	°C	20,0	19,5	20,5	OK	
Temperatura do ambiente	°C	20,0	19,5	20,5	OK	
Temperatura do equipamento	°C	20,0	19,5	20,5	OK	
Temperatura do produto	°C	20,0	19,5	20,5	OK	
Temperatura do ar no produto	°C	20,0	19,5	20,5	OK	
Temperatura do ar no equipamento	°C	20,0	19,5	20,5	OK	
Temperatura do ar no ambiente	°C	20,0	19,5	20,5	OK	
Temperatura do ar no equipamento	°C	20,0	19,5	20,5	OK	
Temperatura do ar no ambiente	°C	20,0	19,5	20,5	OK	
Temperatura do ar no equipamento	°C	20,0	19,5	20,5	OK	
Temperatura do ar no ambiente	°C	20,0	19,5	20,5	OK	

Qualification and Calibration documents

FITOCLIMA STABILITY CUSTOMER APPLICATIONS

(CUSTOMER SPECIFICATIONS AND ACCESSORIES MAY RESULT IN DIFFERENT PRODUCT IMAGES)



FitoClima 25.000 PH – Pharmaceutical products long term stability



Stainless steel shelving with 9 racks for maximum storage capacity



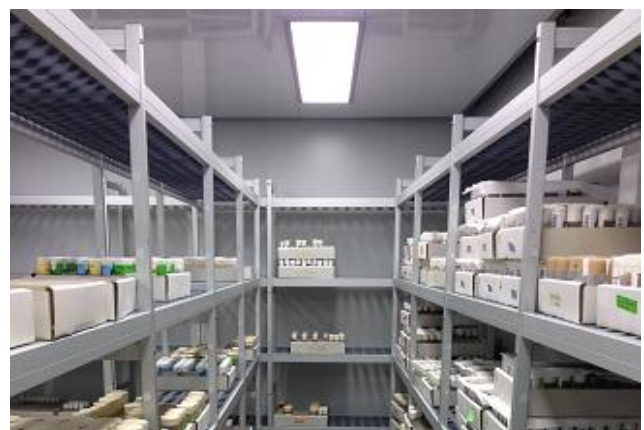
FitoClima 10.000 PH – Pharmaceutical products stability testing



Interior shelving in stainless steel structures and polypropylene trays



Set of 4 x FitoClima 25.000 PH – Drosophila behavior research



Interior of one "Mosquito room"

Features and specifications are subject to change. Aralab continuously studies ways to further develop its products to achieve better performances and overall product quality. As a result, characteristics and specifications provided in this document may be subject to changes.

YOUR OWN CLIMATE
Our main goal

Let's meet!
aralab@aralab.pt
www.aralab.pt
T: +351 219 154 960